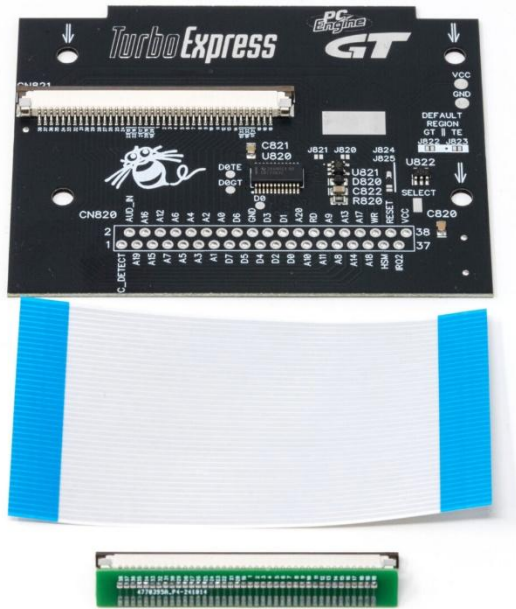


INSTALLATION INSTRUCTIONS

TurboExpress / PC Engine GT
HuCard Connector Board



Scan to Watch Video Guide



Tools Required

Soldering Iron
Desoldering Gun / Solder Sucker
Wire Strippers
Misc. Hand Tools

Preparations Before Installation

It is critically important that the TE / GT is serviced and operation is confirmed prior to installation of the modification. This typically includes at minimum a replacement of all electrolytic capacitors (“recap”) and other components may need repair as well.

Introduction

A direct replacement for the TurboExpress (“TE”) or PC Engine GT (“GT”) HuCard connector board, a variant is available for region-free (“RF”) capabilities.

Do not attempt to install the mod without first confirming your console is fully functional.

Kit Contents

HuCard Connector Board
FFC Ribbon
Reverser Riser
Wire [For “SELECT”, RF Only]

Disassembly

- 1) Remove the (6) screws from the rear of the TE / GT and carefully separate the halves of the shell, removing the two ribbon connectors and connector from the main board.
- 2) Remove the (1) screw from the top left of the main board. Remove the connector from the battery compartment to the main board.
- 3) Carefully lift the main board from the rear half of the shell and remove the (3) screws from the factory HuCard connector board.

Installation Complexity



[SIMPLE]

Soldering Skill Level Required

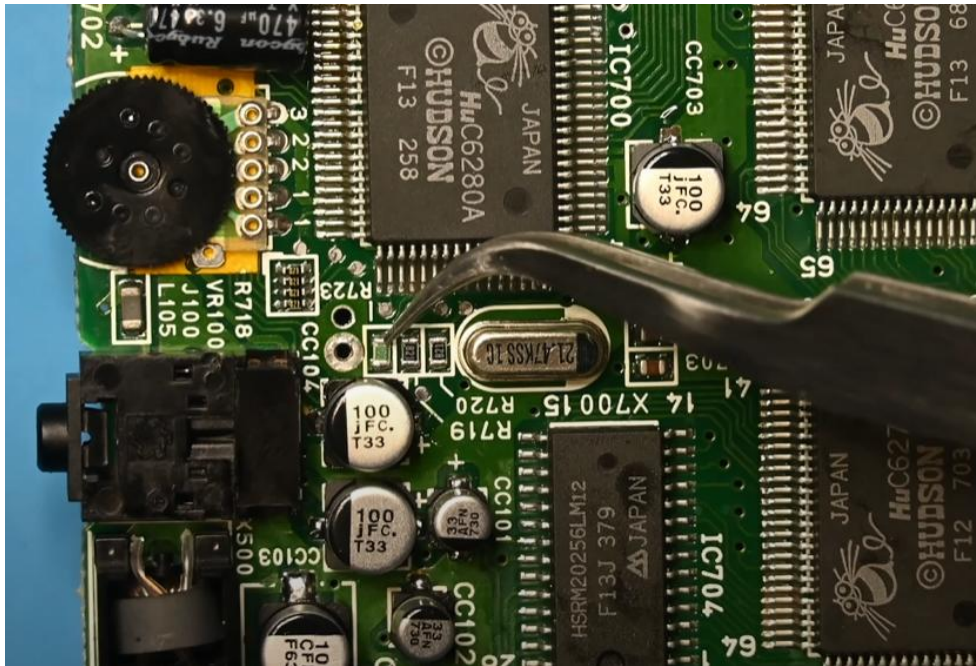


[EXPERTS ONLY]

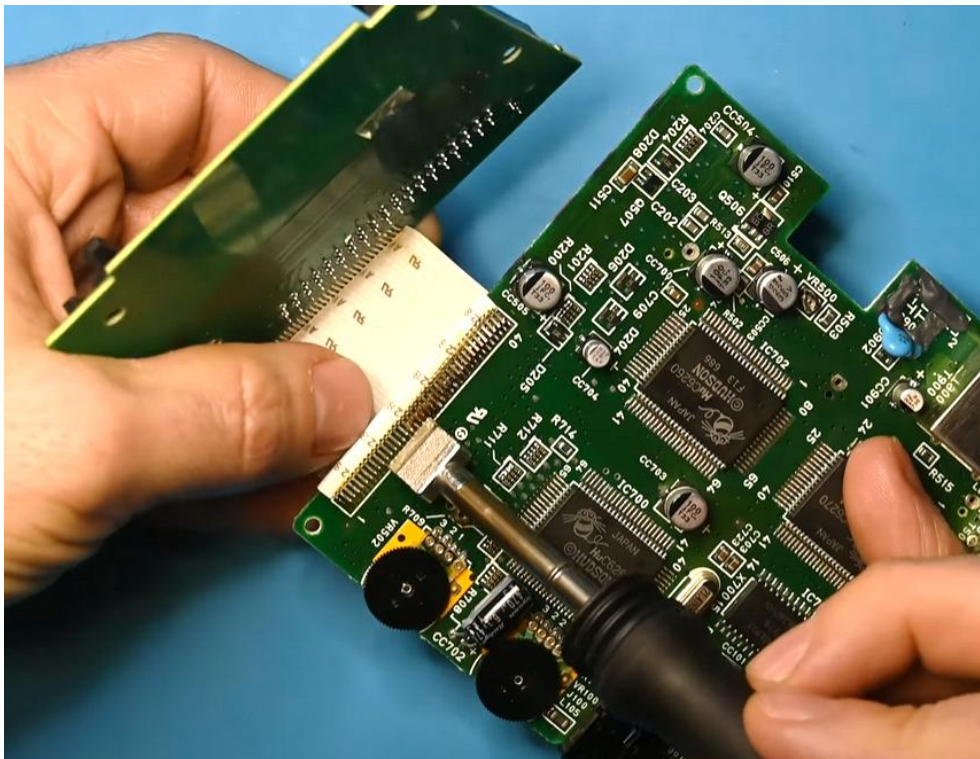
INSTALLATION INSTRUCTIONS

*TurboExpress / PC Engine GT
HuCard Connector Board*

[GT only:] Close “jumper” R723, this will connect the HuC6280A Pin 29 to GND. This will already be populated with a 0 ohm resistor on TE models.



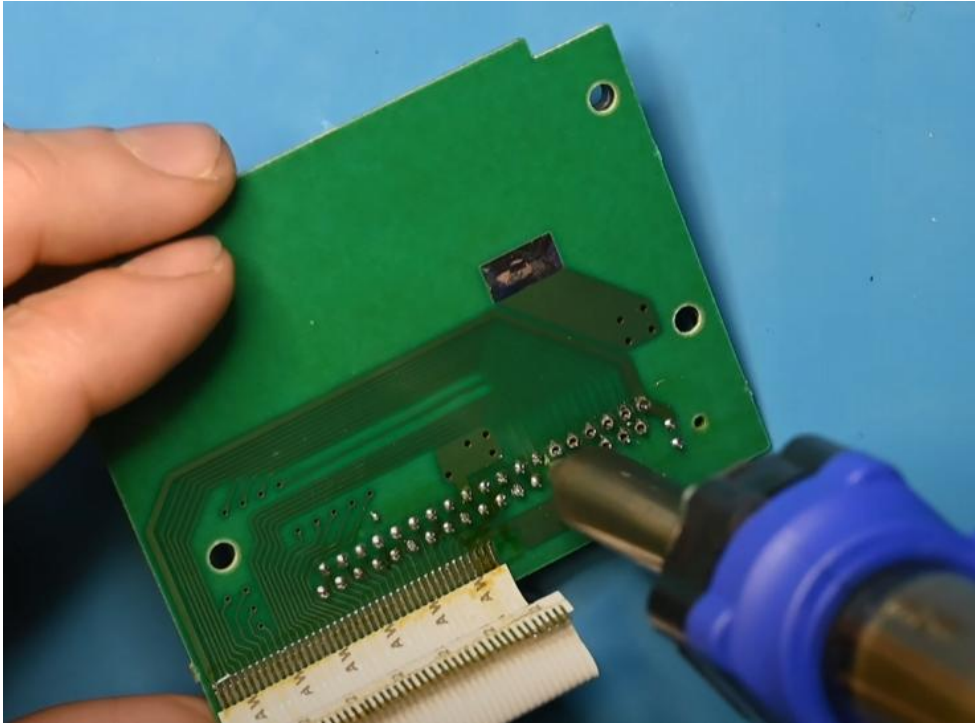
Using flux and a soldering iron, remove the ribbon from the main board.



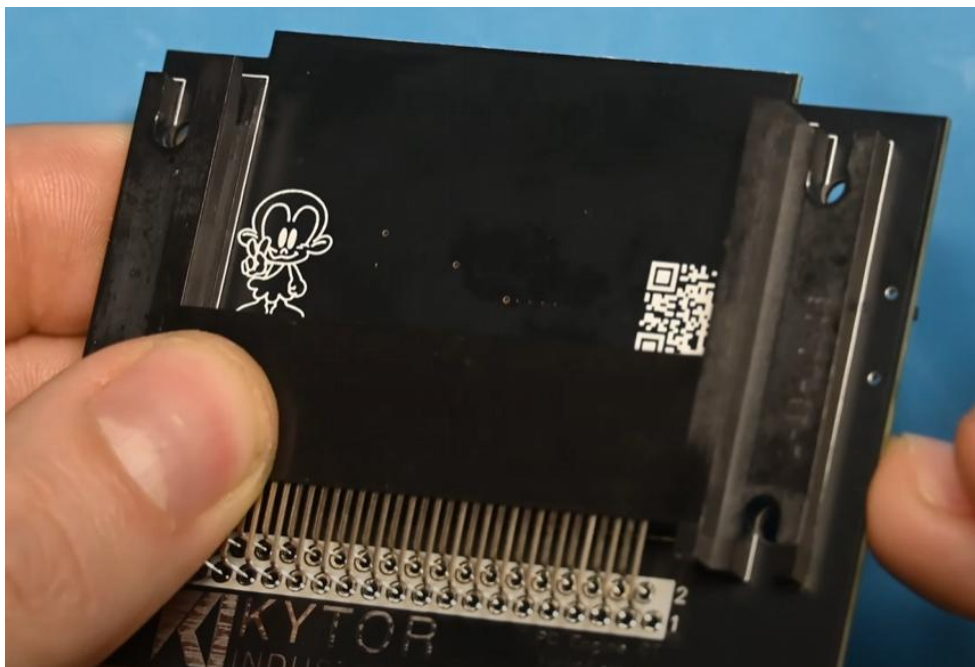
INSTALLATION INSTRUCTIONS

*TurboExpress / PC Engine GT
HuCard Connector Board*

Apply fresh solder to the HuCard connector pins, then using a desoldering gun or solder sucker, desolder the connector from the factory HuCard connector board.



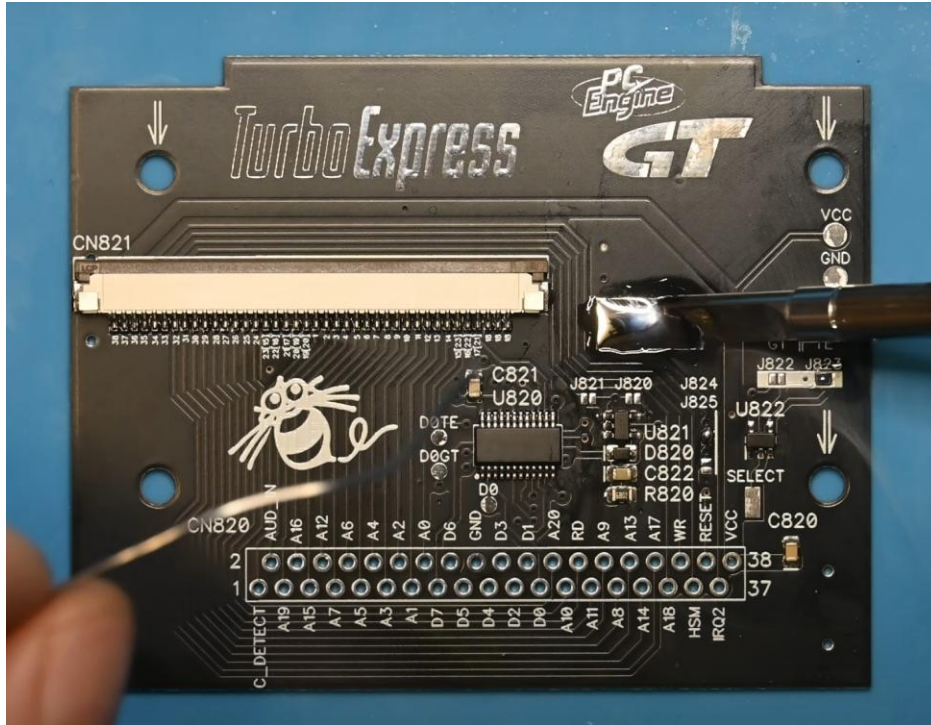
Carefully line up the HuCard connector footprint with the printed footprint layout, and solder all pins into place on the reverse side.



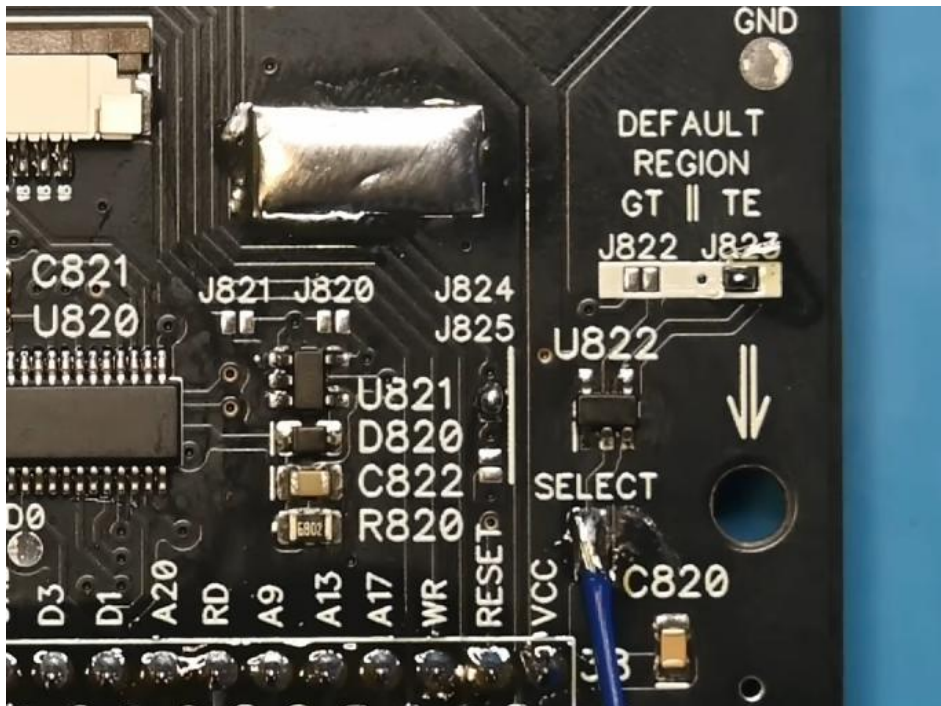
INSTALLATION INSTRUCTIONS

TurboExpress / PC Engine GT
HuCard Connector Board

Apply solder to the large grounding pad.



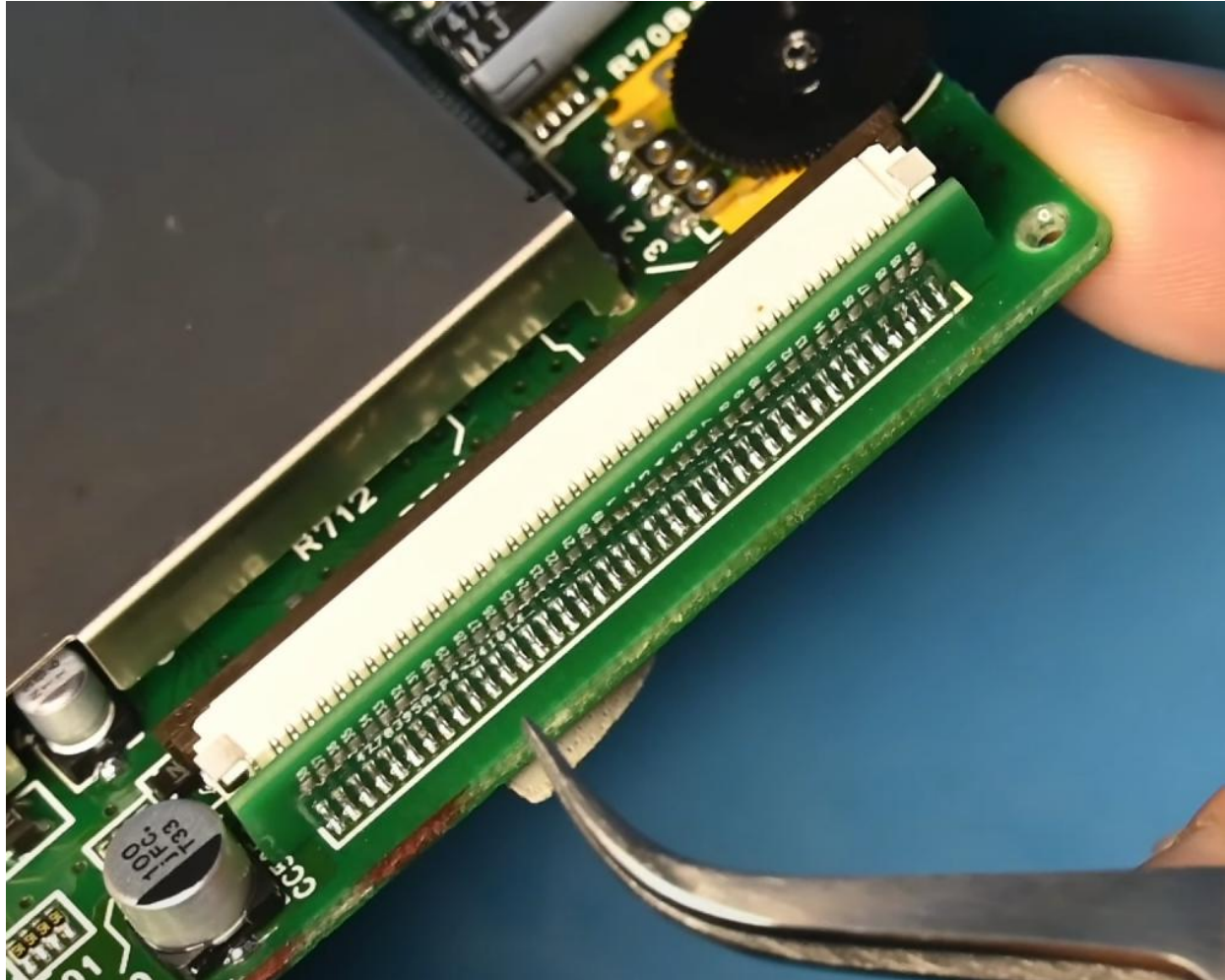
[RF mod only:] Close jumper J823 to set the default boot region to TE or close J822 to set the default boot region to GT. Solder one end of the provided wire to the SELECT pad.



INSTALLATION INSTRUCTIONS

*TurboExpress / PC Engine GT
HuCard Connector Board*

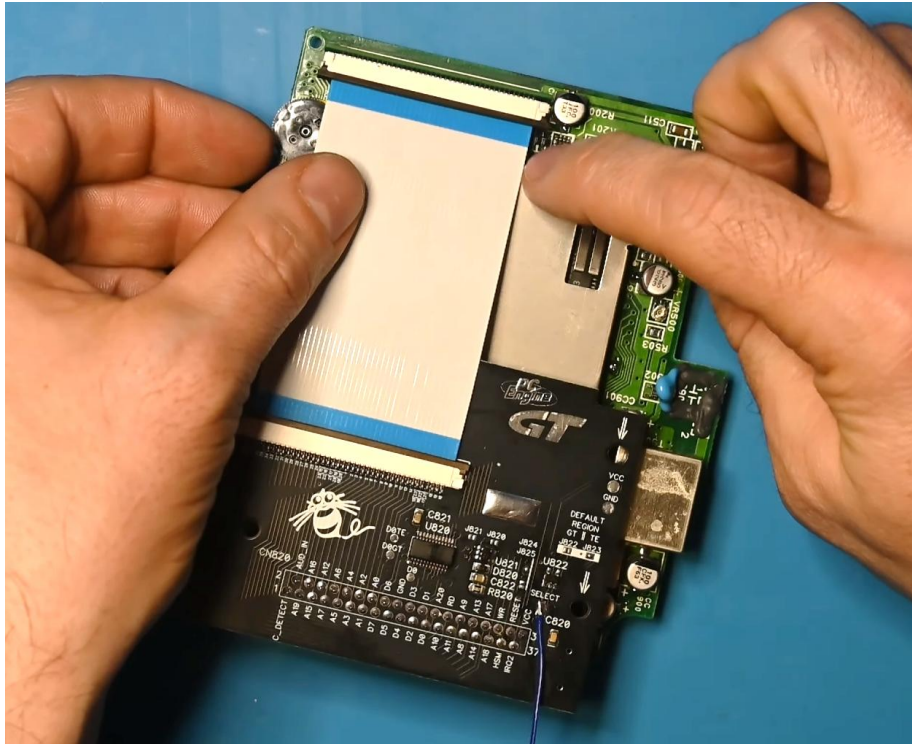
Solder the reverser rider to the pads where the factory ribbon was removed. The FFC connector should face towards the metal shielding. Angle the FFC connector parallel to the main board or slightly upwards. Perform a magnified inspection to ensure connections are not shorted.



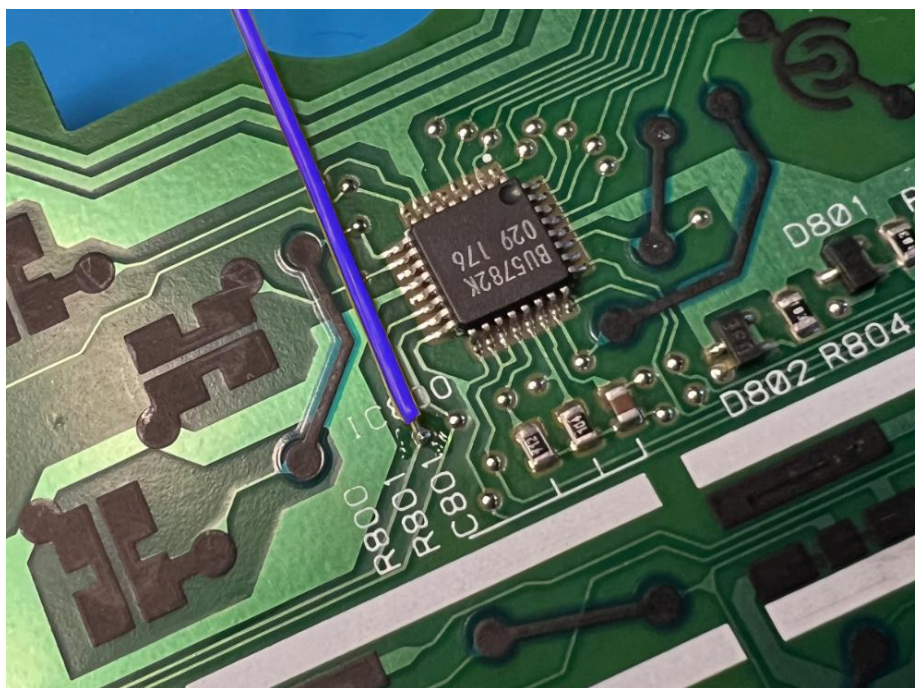
INSTALLATION INSTRUCTIONS

*TurboExpress / PC Engine GT
HuCard Connector Board*

Connect the FFC ribbon to the main board and HuCard connector board as shown.



Solder the other end of the SELECT wire to the pad on the control board shown and reassemble in reverse order.



INSTALLATION INSTRUCTIONS

*TurboExpress / PC Engine GT
HuCard Connector Board*

Use

[RF Only] Hold the SELECT button while powering on the system to switch regions. Power cycle the unit to reset back to the native region. Allow the unit to remain powered off for at least 10 seconds for the region-switch capacitor to discharge.